

SHARING MONTA LOMA



Regular updates on shared community use of the school fields at Monta Loma Elementary for the residents of the Monta Loma neighborhood from the Mountain View Whisman School District



MONTA LOMA OUTDOOR IMPROVEMENTS PROJECT

The Mountain View Whisman School District and the City of Mountain View are jointly exploring how to best maximize school/community use of Monta Loma Elementary greenspace.

The Board of Trustees approved Carducci Associates on Sept. 9 as the architectural design firm for the Monta Loma Outdoor Improvements Project. MVWSD and the City will work together with Carducci Associates to guide the process. The goal is to receive input from all to create a comprehensive design for Monta Loma's field and outdoor areas that provides for varied school and community uses.

We want to hear from you!

Please join us to provide your input on the Monta Loma Outdoor Improvements Project.

PUBLIC MEETINGS

Project kick off meeting covering the community input process

**Wednesday, December 15, 2021
6 p.m. at <http://mvw.sd/ML>**



See the list of all upcoming meetings here
<https://www.mvw.sd.org/MontaLomaField>

FOCUS GROUPS

In addition to public meetings, we are seeking input from the community in focus groups. We need participants! In order to function effectively as research groups, membership will be limited to 10 people for each group. Members will be chosen randomly from the applications submitted.

If you can participate, please complete this form by Dec. 31. <http://mvw.sd/focus>

The MVWSD Board of Trustees will be discussing the project's community engagement process at its meeting on **Thursday, Dec. 9** at 6 p.m. (Accessible by Zoom or YouTube.) For agenda and details, please see mvw.sd/trustees

Email updates

To sign up for email updates on this topic, please visit:

<http://mvw.sd/ConstUpdates>



Get in Touch



facebook.com/MVWSD
facebook.com/MontaLomaElem



#MVWSD



MVWSD.org/MontaLomaField

Para obtener una versión en español de este aviso, vaya aquí.



The Mountain View Whisman School District prohibits discrimination, harassment, intimidation and bullying in educational programs, activities, or employment on the basis of actual or perceived ancestry, age, color, disability, gender, gender identity, gender expression, nationality, race or ethnicity, religion, sex, sexual orientation, parental, pregnancy, family or marital status, military status or association with a person or a group with one or more of these actual or perceived characteristics. The Mountain View Whisman School District requires that school personnel take immediate steps to intervene when safe to do so when he or she witnesses an act of discrimination, harassment, intimidation, or bullying. Questions or complaints of alleged discrimination, harassment, intimidation and bullying, equity or Title IX equity and compliance concerns should be directed to Tara Vikjord at 650-526-3500, 1400 Montecito Ave., Mountain View, CA 94043, or tvikjord@mvw.sd.org.

Security cameras

One of the projects identified in MVWSD's Master Facility Plan and the Measure T Bond was the need for security cameras in public areas at all school sites as a way to increase safety for students and staff members by deterring misconduct and preventing vandalism. Twice this fall, the bathroom at the edge of Monta Loma's campus has been sprayed with racist graffiti. We are seeking input before the plan for security cameras is finalized.



Mountain View Whisman
School District
1400 Montecito Ave.
Mountain View, CA 94043

CAMERAS INPUT MEETING

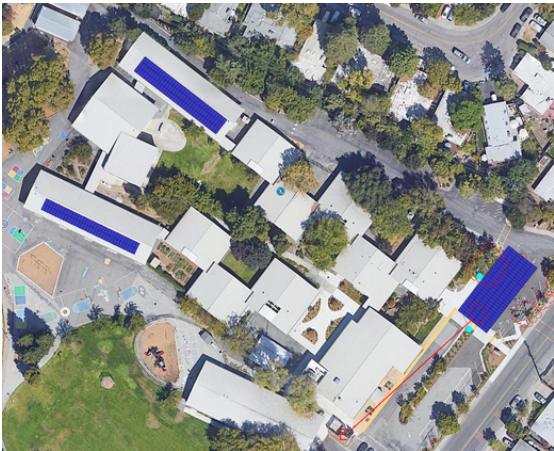
December 8
4:00-5:00 p.m.
on Zoom at
**[http://mvw.sd/
security12_8_12](http://mvw.sd/security12_8_12)**



Solar panels MVWSD CONSTRUCTION

Monta Loma will get three solar arrays on campus, as one of Measure T's efficiency projects. Two arrays will be on the roofs of classroom buildings. One will be constructed on supports near the front office sidewalk and drop off car lanes. These locations were updated in order to not constrain the Outdoor Improvements Project.

These solar panels will save our schools \$600,000 annually in electrical costs. In early summer, several non-mature trees will be removed to make way for solar construction. Two trees will be planted for every one removed. Construction starts June 2022.



Solar panel locations on campus



Office in front of school. Red circles show trees to be removed for solar panel construction.