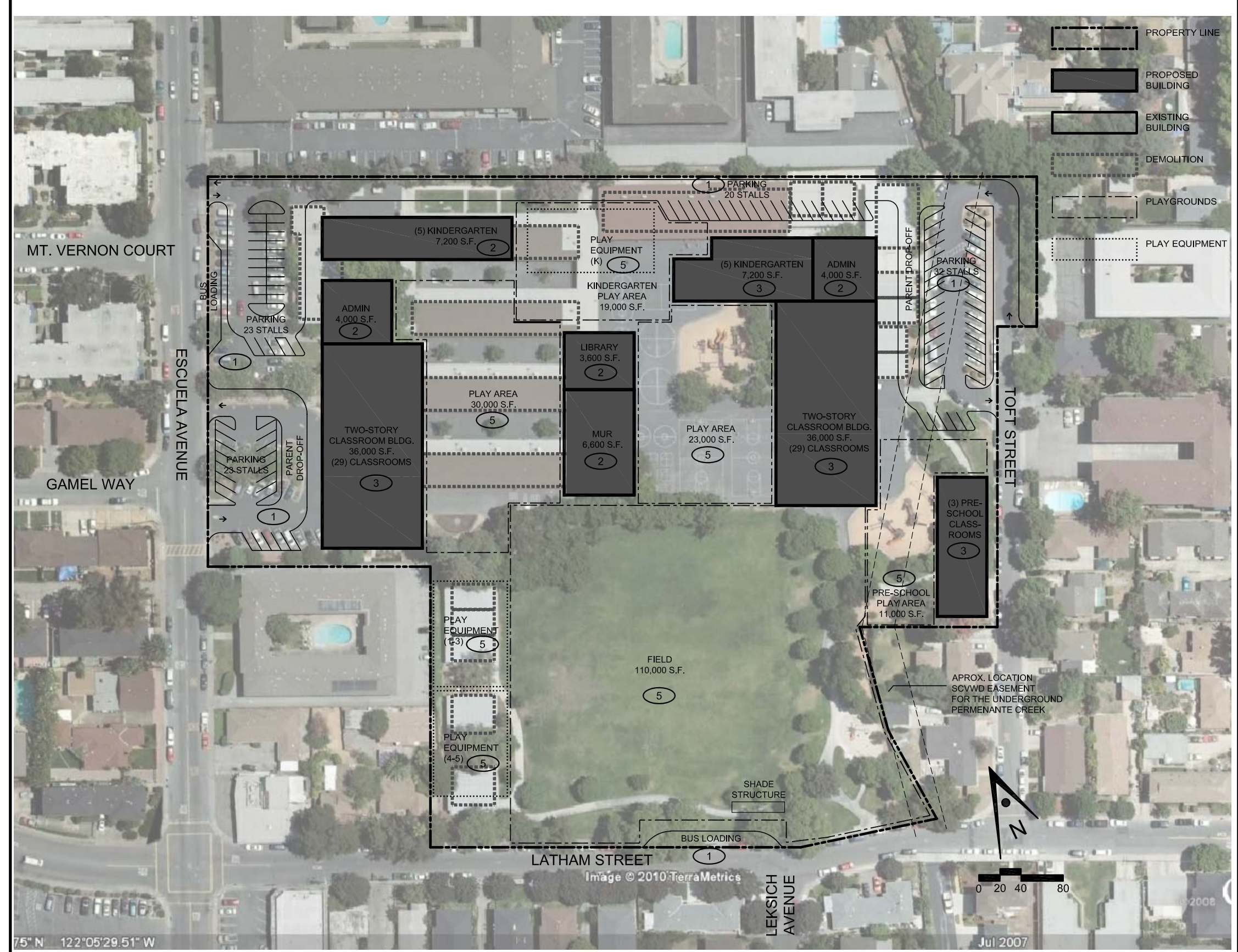
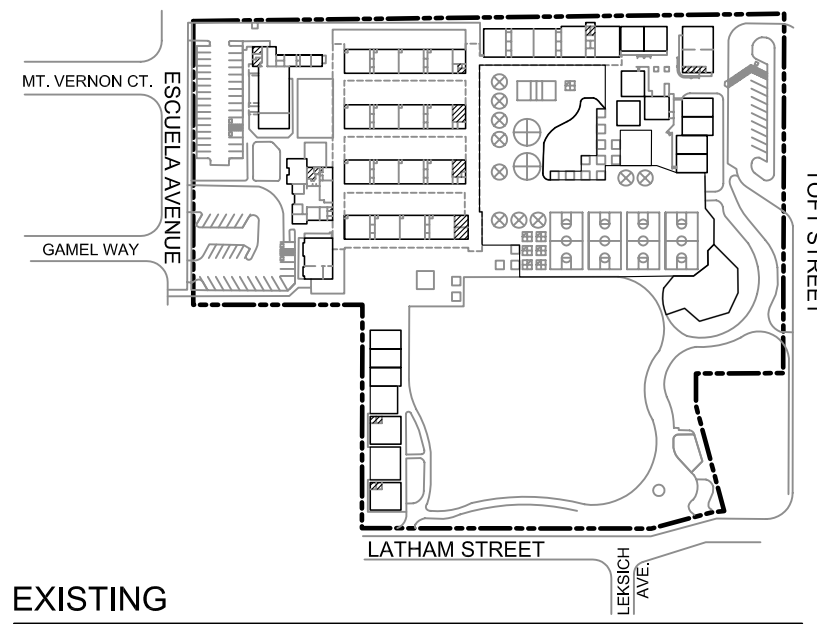


SITE ORGANIZATION

- 1 **Bus Loading, Pick-up/Drop-off and Parking**
 - Separate bus loading, parent drop-off, and parking along Escuela Ave.
 - Expansion of existing parking lot on Toft Ave. to create separate parent drop-off
 - Addition of new kindergarten parking lot
 - New bus loading area on Latham St.
- 2 **Support Facilities**
 - New centrally located MUR and library/media center buildings serving both schools
 - New administration buildings near both entries
- 3 **Classrooms**
 - New two-story classroom buildings forming two full size schools
 - New pre-school classrooms forming a pre-school cluster near parent drop-off on Toft Street
- 4 **Kindergarten Cluster**
 - New kindergarten classroom buildings forming kindergarten clusters in each school
- 5 **Play Areas**
 - Designated age appropriate play equipment
 - Development of hard-court play area



February 18, 2010

