

# MONTA LOMA OUTDOOR IMPROVEMENTS PROJECT FENCING OPTIONS FEEDBACK

Presentation to Board of Trustees

August 28<sup>th</sup>, 2023

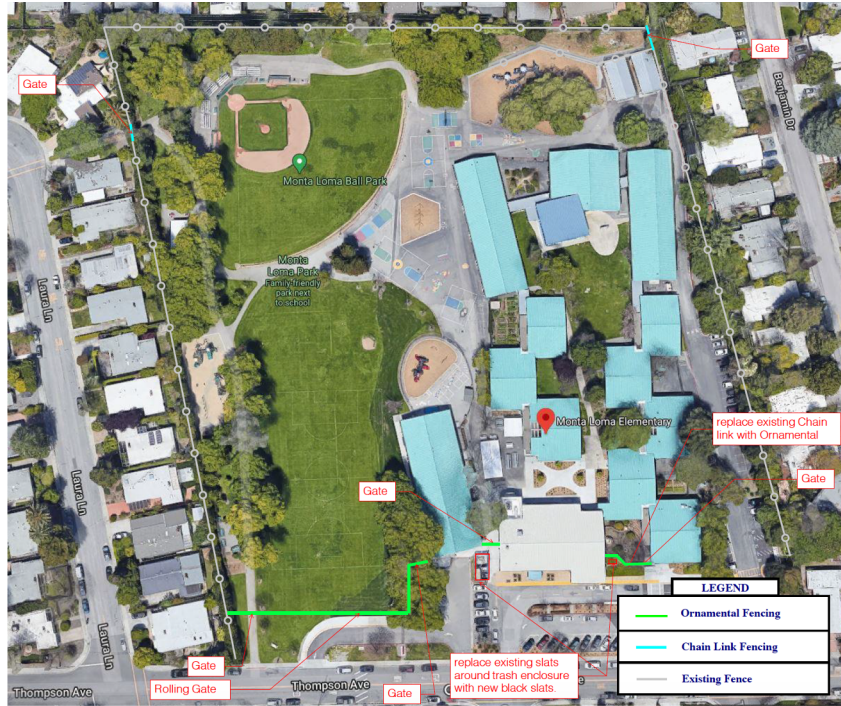


# AGENDA

- Fence Options and Imagery Recap
- Fence Options Budget Recap
- Staff Input Summary
- Community Input Summary
- Ice Cream Social Input Summary
- Public Area Takeoffs



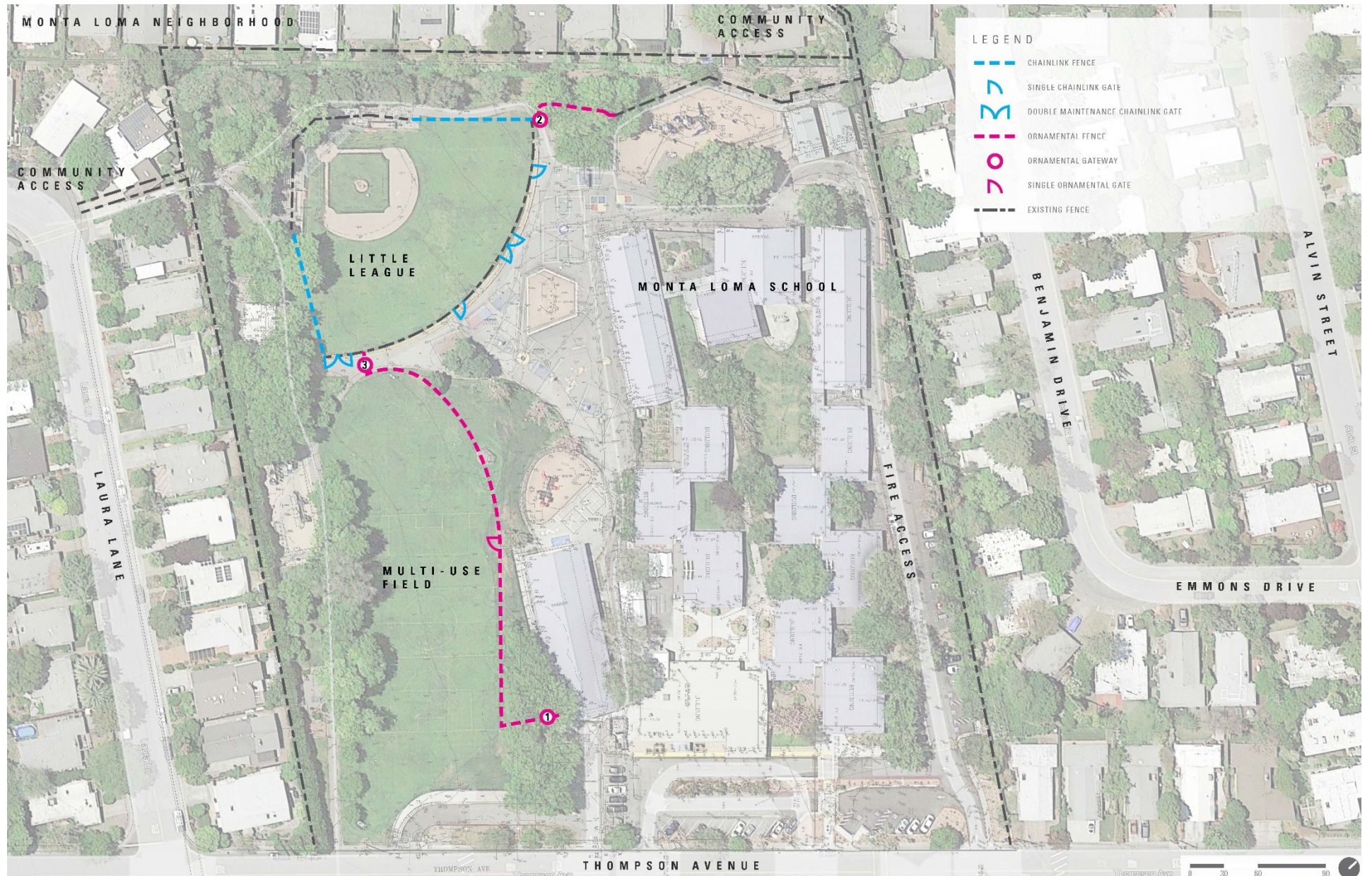
# PREVIOUS PROPOSALS (HYA SEPT 9,2021)



# FENCE OPTIONS

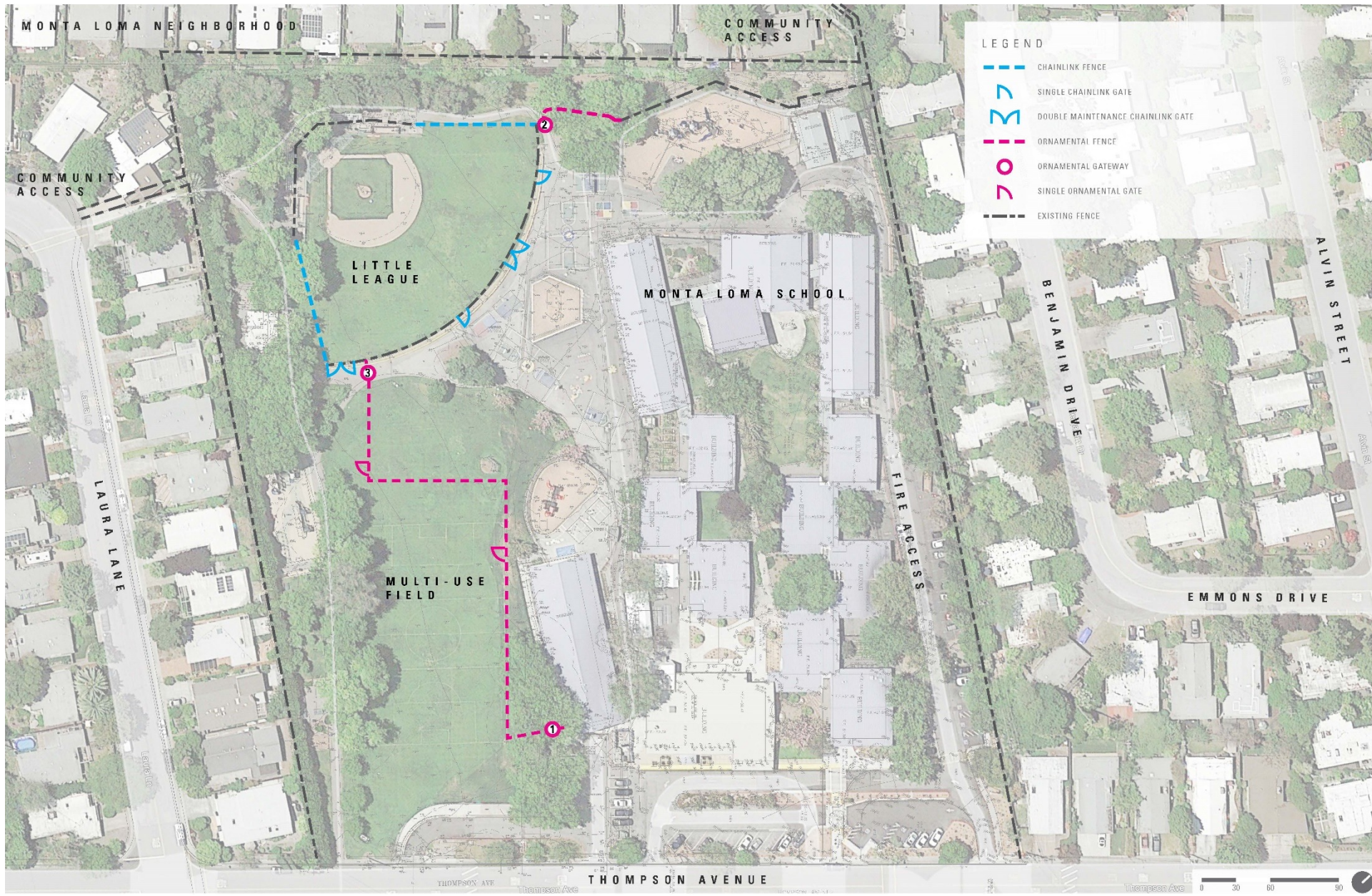


## OPTION 1:



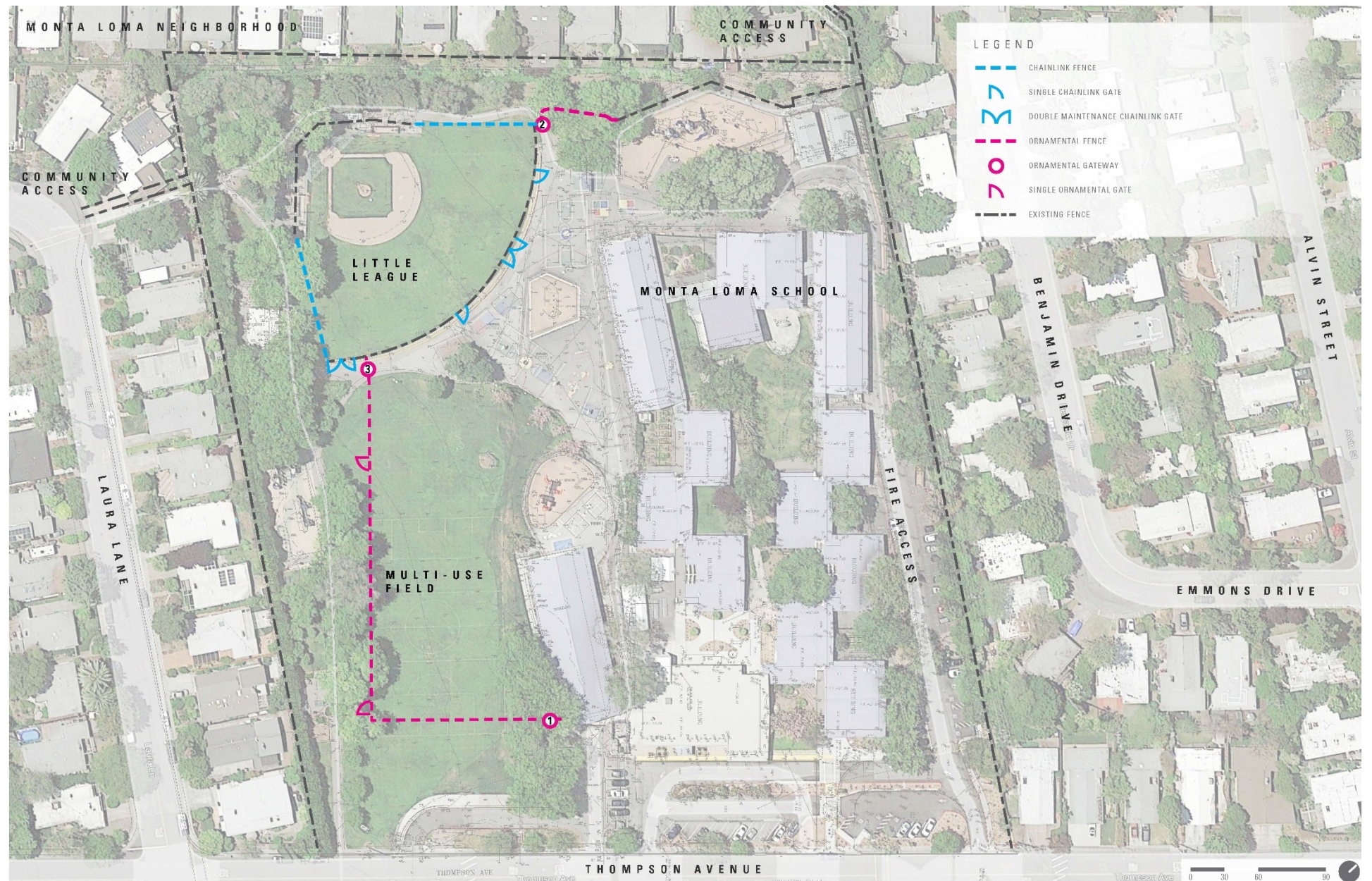


OPTION 2:





# OPTION 3:



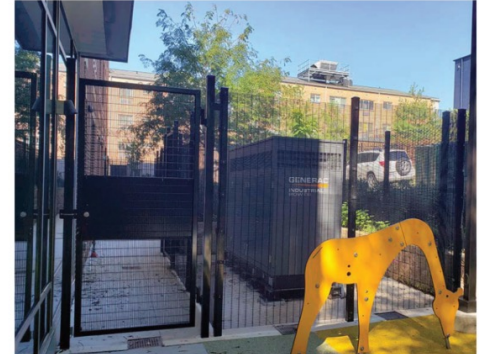
# FENCE & GATEWAY OPTIONS



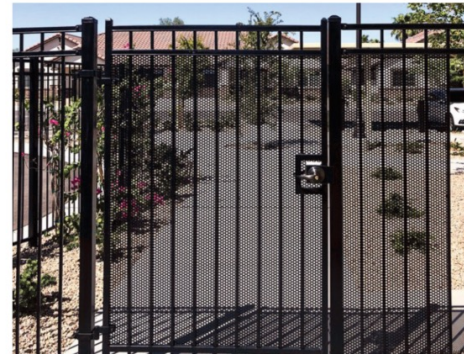
FENCE OPTION 1: CHAIN LINK FENCE



FENCE OPTION 2: OMEGA FENCING



FENCE OPTION 2: AMERISTAR FENCING

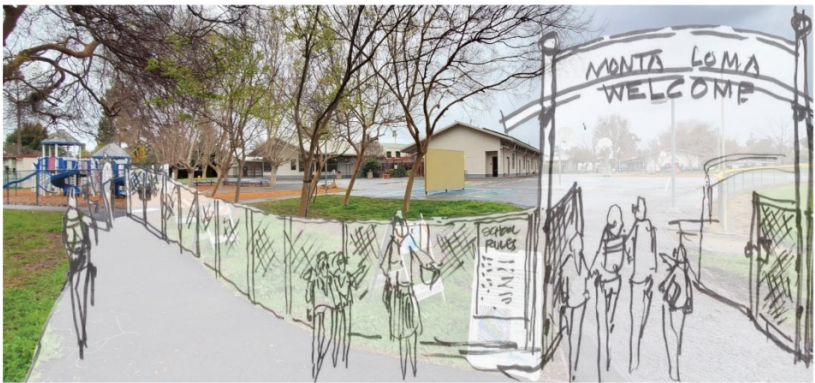




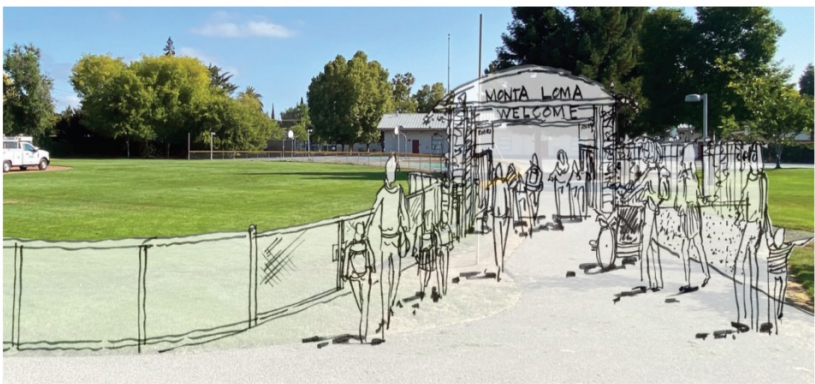
GATE PERSPECTIVE 1



GATE PERSPECTIVE 2



GATE PERSPECTIVE 3



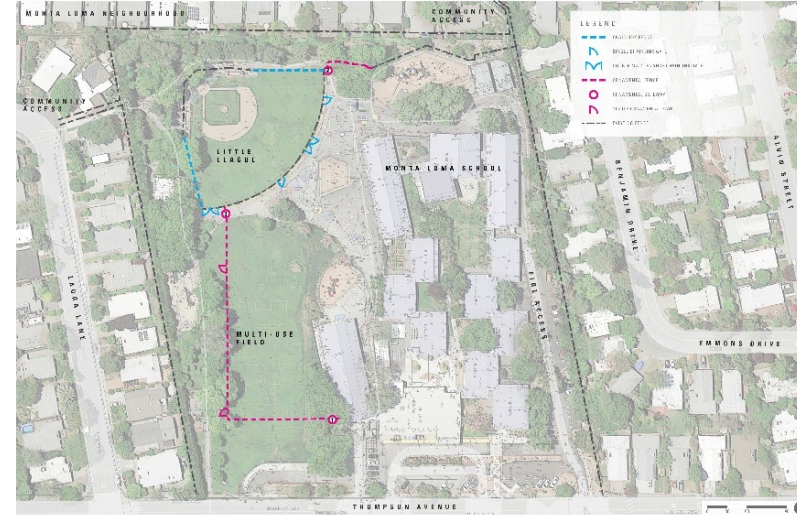
# FENCE BUDGET



## OPTION 1: \$516,721



## OPTION 3: \$554,932

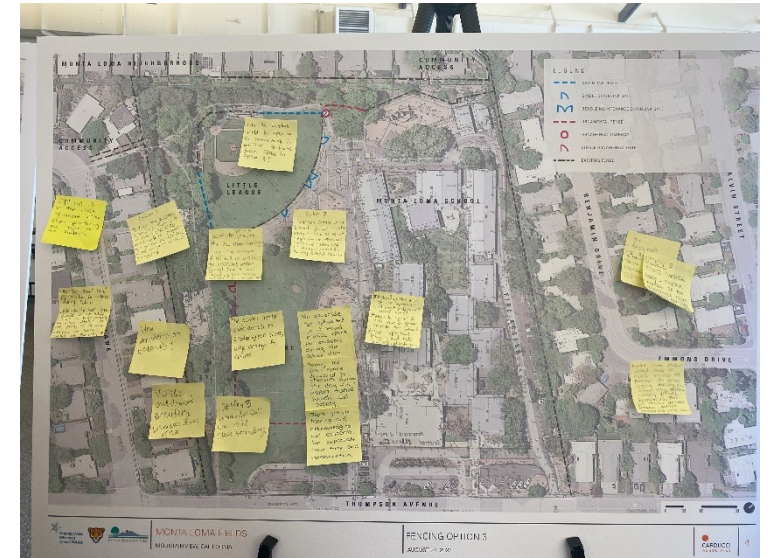


## OPTION 2: \$561,026



STAFF INPUT SUMMARY  
THURSDAY, AUGUST 24, 2023  
3-4PM







Is it possible to adjust/ redraw the boundary in option #1?

@ The fence will mark our school boundaries

make sure sprinkler system - does not spray on electronic <sup>gets out fence or rusts</sup>

Can gate be added @ #2 & #3 for children riding bikes & trikes?

Option 3  
Defines Monta Loma borders. It is also only enforcing what regulations that are in place (stay off of school grounds during school hours)

For security keep fencing around classrooms - don't remove them

Option 1  
We (Monta Loma) would not have access to the soccer field. Not because we can't, but because of the opposition from community.

I wouldn't feel comfortable taking my students outside of a fenced area.

- As much green space as possible for children during school
- Ability to hold large events w/ our whole school to build community and allow students to run, play, use the space
- Anyone on campus is checked into the office →

Who maintains on weekends?

Monta Loma students should have as much access as possible to green space during the school day within clearly defined boundaries. This will reduce uncomfortable, unsafe interactions with com-

Visible and physical boundary  
Delineates times of use.

Option 3  
is the most equitable option when prioritizing the needs of our students.

Option 3  
Want to ensure the ML community that the soccer field will be available to EVERYONE after school hours (but closed during school hours.) (communication issue)

Option 3  
allows for full use and clear boundary

We advocate for option #3 as it would provide space for students during the school day.

Can we ask about the ~~shorter~~ shorter fence around the baseball area?  
Not clear in plans.

Option 2 (repeat from Op. 1)  
We (Monta Loma) would not have access to the soccer field. Not because we can't, but because of the opposition from community.

Can the baseball field be open to the community in addition to the green space in Option 3?

Why would you put the fence right up where the littlest ones are? How does that prioritize students?

IT SHOULDN'T BE FREE ACCESS TO PUBLIC DURING SCHOOL HOURS. THERE ARE ALWAYS POSSIBLE UNSAFE INDIVIDUALS

Option 3  
Defines Monta Loma borders. Future → if ever we were to rent/sell ML property, we would include the field as part of that property.

- \* Protocol question if we go with option 1 - what about walkathon? school events?
- \* Open to option 2 with enough green space for the school
- \* Most important thing is that kids feel safe and comfortable

OPTION 3  
FENCE FARTHER AWAY - THERE NEEDS TO BE DISTANCE FROM CLASSROOMS AND PLAY AREAS. ADULTS NEED BACK

The school needs safe access to shaded green space, large enough for events.

make first period PE for all children get them outside

Peace of mind of staff & students is of utmost importance.  
Option 3  
\* Student Safety  
\* Give them a peace of mind to freely use the green space.

Options 1 and 2 have the fence too close to the TK and Kinder playground and classrooms. Unsafe!

Having the green space dedicated to students during the day will support student health and safety.

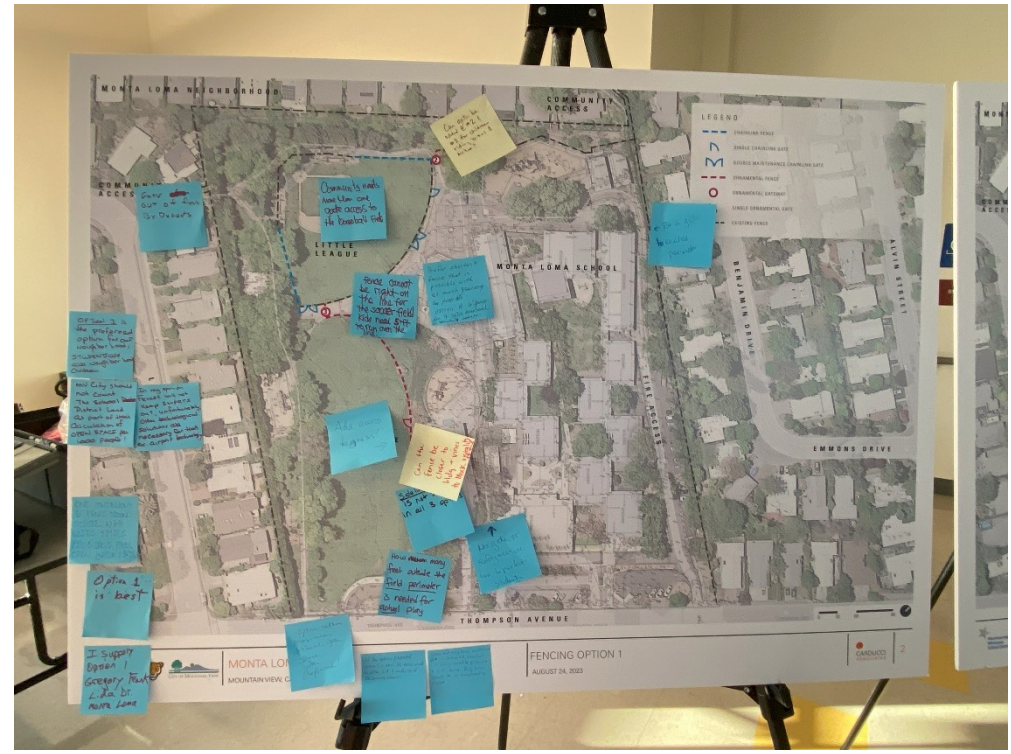
Thank you for hearing and acknowledging our concerns. We appreciate your time and consideration.

# Summary of what we heard - Staff:

- A fence helps create a boundary – delineating school & public space during school-hours
  - This allows staff to focus on play/learning rather than hypervigilance
- Current condition allows for public to walk through blacktop, dogs off-leash to approach school children, and adults can walk right up to TK fence during school hours
  - Children are exposed to hostile/dangerous situations, which takes away from their enjoyment and enrichment while outdoors
- Students & Staff deserve more shaded & green space
  - **Option 1** – Majority of outdoor use area is hardscape, and least safety/experience for the students. Makes entire open green space a public park and limits activities for students & staff.
  - **Option 2** – Provides an acceptable amount of green space, but still would warrant having to coordinate with the community on larger school events like the Fall Festival, and Walk-a-thon, which could still warrant hostile interactions
  - **Option 3 – Preferred.** Provides greatest potential for new experiences for children. Prioritizes safety, boundaries, and mental/emotional/physical well-being
- Staff wants the public to have access to green space as much as possible and are open to show an option that splits the field space equally.

COMMUNITY INPUT SUMMARY  
THURSDAY, AUGUST 24, 2023  
5-6:30PM







← Put in gate to enclose perimeter

↑ No gate or safety measure here to protect students

side line access is not sufficient in all 3 options

Ada access to grass? →

Of the options presented, option 1 is best. No fence would be better, but I understand the security concerns. Given that any fence would not deter a determined assailant, a 4' fence would be preferable to a 6' fence. Any fence should be as transparent as possible.

Option retains maximum visual open space. I am preferred!

I support Option 1 Gregory Frank Lida Dr. MONTA LOMA

what will take the place of open space for us if you take the field away? why can't you provide security on site where school is in session to make teachers safe?

No chain link around soccer field please. Also the "Double Wire" will make it feel prison like! (Large wire grid good?)

I work as a yard duty and it's important to have a fence since we been getting people aggressive when we tell them that they don't supposed to be here during school hours

Ugly like Prison

ugly

MV City should not count The School District Land as part of their calculation of OPEN SPACE per 1000 people!

OPTION 1 is the preferred option for our neighborhood; STUDENTS live also neighborhood children.

Community needs more than one gate access to the Baseball Field

Option 1 is best

GATE OUT of flow By Dugouts

ONE CONTINUOUS 6' FENCE AROUND SCHOOL WITH GATES. SIMPLE. REINFORCED LEAVE PARK OPEN. OPTION 1 BEST

ONE CONTINUOUS 6' FENCE AROUND SCHOOL WITH GATES. SIMPLE. REINFORCED LEAVE PARK OPEN. OPTION 1 BEST

During Summer are fields used if ML is a Summer school or 4 camp site

OFF LEASH DOGS IN PARK HARASSING PEOPLE

The City SAYS TO CONTACT ANIMAL CONTROL WHO ONLY WORK 8-430PM

- Please do not harm the ginko trees! - safety first - the fence we like is the black tree that is the most visible

6ft fencing is easily vaulted. when plants are grown on fences even easier.

Soccer field Spectators can be on both side of the fence - Option #3 prevents side-line access to the field

It is important that families using the tot lot can also have the ability to use the grass without having to go around a fence - kids playing ball while others are in playstruck

I strongly dislike off-leash dogs in unfenced areas, especially anywhere near kids.

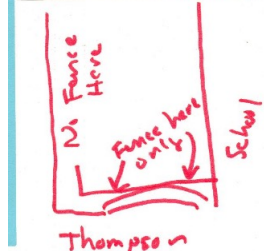
#3 Becys I would Love to do a pc comfortable (I Love)

I do not like this fence. (BLACK CHAIN LINK)

I do not like this fence (OMEGA MAX DOUBLE WIRE)

SPLIT IN HALF (Field)

Can the fence be closer to bldg + vines to block visibility



don't waste money on fancy entrance

gates should be as wide as paths - full width of paths

option 4 is best

open gates with APP easier access

As a mother and staff I would like option 2. of course option 3 has more space but that's a perfect

I'm a resident and a parent @ MLE. I support a perimeter fence option that provides green space for kids and leaves the large field unfenced outside of school hours. I think #2 is therefore my preference.

Option #3 offers more green area and space for kids to play and feel safe while doing PE/Recess Time. The other 2 options are too confined and will drastically reduce the available space to play.

I want option 3 because there is more grass for our gym to play. Montalomo Student !!

What are the AC of the Option #3 kid-protected field and how does it compare to the other elementary schools? Bubba Castro Imai...

Colors are much more fun for the park-fencing fences.

What does this signal to kids? Who actually uses the park fields? kids? Not during summer?

gates should be double/not a single opening bikes/wagons/strollers/wheelchairs etc. need to be able to move through

During Summer are fields used if ML is a Summer school or 4 camp site

OFF LEASH DOGS IN PARK HARASSING PEOPLE

The City SAYS TO CONTACT ANIMAL CONTROL WHO ONLY WORK 8-430PM

Soccer field Spectators can be on both side of the fence - Option #3 prevents side-line access to the field

It is important that families using the tot lot can also have the ability to use the grass without having to go around a fence - kids playing ball while others are in playstruck

Prefer this style of fence for park. (unintended consequence)

#3 Becys I would Love to do a pc comfortable (I Love)

I do not like this fence. (BLACK CHAIN LINK)

I do not like this fence (OMEGA MAX DOUBLE WIRE)

# Summary of what we heard - Community:

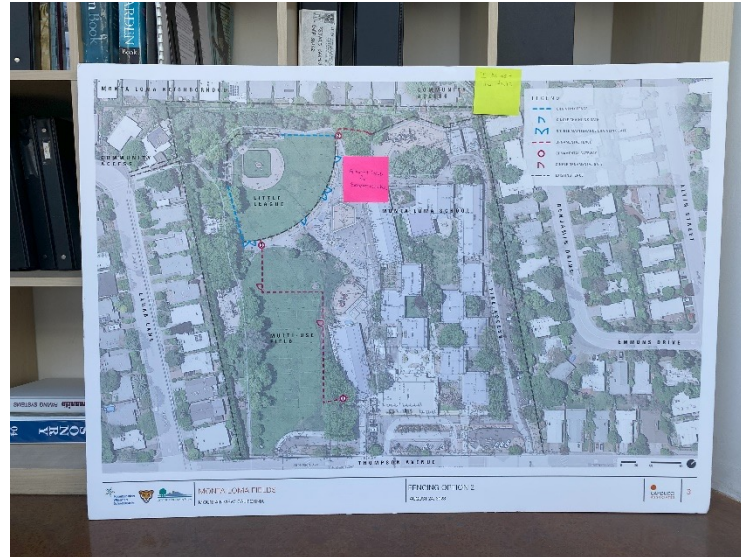
- Hours and area of use need to be clearly and consistently identified
  - In all options, perimeter access will remain
  - Hours are approximately 4pm-dusk on weekdays and all day on weekends
- Concerns with dogs
  - Due to regulation, technically dogs are not allowed on school property. At very least, dogs should be on-leash
  - Off-leash dogs are regularly an issue, and owners don't take total accountability
  - Pathways are too narrow for passersby with dogs without interaction
- Soccer Field striping is important for girls U10- 7x7 games
  - In all options, optimal space for soccer play, and spectating is not maintained
  - Sideline soccer access is not sufficient. Kids need about 5' to run over the line.
  - Soccer is used mostly by the City on the weekends
- Park and recreational space is lacking in the ML community
  - District should work with the City to provide these amenities

# Summary of what we heard - Community:

- Fence Options and Gates
  - Gates should be ADA accessible and locked “open” after hours. District should consider technology that allows gates to be opened/closed via phone app for convenience
    - Gates should double, not single and be as wide as pathways
  - Prefer fencing that is more transparent like Omega Architectural, and colorful or with plants
    - 4’ high fence is preferred over 6’ high fence. Many noted 6’ high fence is easy to climb.
    - Styles like black chain-link and Omega MAX (double-wire) not preferable
  - Interior fences at classrooms
    - For security, keep perimeter fencing at classrooms
    - Once an option is approved, interior perimeter fences will be assessed for removal/upgrade if needed
  - **Option 1 – Preferred.** Optimizes majority of green space for the community.
  - **Option 2** – Seems like a reasonable compromise, with majority of green space un-fenced for community access
  - **Option 3** – Provides most space for children to play, for PE and other school activities. This option also blocks access from tot lot to green space.

ICE CREAM SOCIAL INPUT SUMMARY  
SUNDAY, AUGUST 27, 2023  
3-5PM











NO FENCE  
Fancy!

Fence make this place like a jail.  
BZZZ

Option #0  
NO FENCE

Option 0 NO FENCE!  
put your \$\$ into something productive

OPTION 1

Greatest Good for Greatest Number

I do not like this

+1  
OPTION #0  
NO FENCE

I would prefer no fence. My nephew of Encinitas, CA lost my school (Sagehen) back in 2003 and I still feel that it harmed the community.

4' IS HIGH ENOUGH

Oh please -- No huge entrance arch!

OPTION #1 PREFERRED COMMUNITY GREEN SPACE

OPTION #1 IS A GREAT COMPROMISE

PLEASE NO FENCE!  
My son goes to school here and we don't want the need for fencing.

Of these options, this is the best. My son, a March band chess likes going to the park. I hope to see him at some point and not at some other place.

4' YELLOW FRIENDLY FENCE HIGHLIGHTS BOUNDARIES

No Fence \$0.

No fence is great.  
Aren't you?

NO CHAIN LINK, PLEASE

Best option. Remember - kids who play Little League have siblings that play in parks on weekends.

If you must do a fence, make #1.

Put a gate here. North side of little league field.

If there has to be a fence, then option 1 is best choice.

my house  
Go with this opt and I will personally try to get illegally parked cars towed.

Please move the soccer field toward the baseball field + move the fence back from the street.

Need to have spaces for MVAL/ATSO soccer fields + MVAL tee-ball.

Whatever fence is the least "visible" - thinnest bars.

no Black fences make them green

Yes

Putting a fence in Montezuma park will do nothing against the biggest risk of the town for children. If one is built, I will raise again, because a school board in NV. & Champaign (Illinois) Board.

NO Fences !!!

Best of the three

I like this option!

In just 100 years, we give my football because none of these are ideal.

Want to find a way to share the green - community school.

These options are terrible!  
Don't cut the soccer field in half.

I do not like this

#3 please!  
- Please preserve gardens  
- Please maximize school use areas!

What about green?

Original dark blue please!

Our children might attend next year. We don't want chain link or bar fences

I want the lawn open: it's a big hay! Rose 2484 Alvin

FENCE: COLOR BLACK HEIGHT NO GREATER THAN 4'0"

PREFER NO FENCE

OPTION 0

OPTION 1 KEEP CURVED FENCE STYLE

Option #0 is best. Option #1 is second best (still bad option).

option #1 best of the bad options

Option #1 Resident @ 337 Thompson.

This is the best option here, it doesn't cut the field off but it could be better by more tightly fencing the whole park and with a less decorative fence.

This fence issue seems like a political pissing contest between the school district and city.  
- An 8 year resident

Neighborhood Improvement  
Option #1  
1) Ball backstop in common field  
2) Fence removed to backstop area visible from road in school grounds.

I like Option #1.

m  
I do not like this

This fence issue seems like a political pissing contest between the school district and city.  
- An 8 year resident

OPTION #1 IF FENCE HAS TO BE PUT UP

Least Bad Option

#1 has the most pleasing design w/ curving fence.  
#2 has the added benefit of a barrier of a secure office of security for kids!

least bad of the three

OPTION 2

OPTION 3

FENCE TYPES

Montezuma Loma Outdoor Improvements Project | Carducci Associates

26



# Summary of what we heard – Ice Cream Social:

- **Option 0** – No fence is preferred but 4' high fence should be enough to communicate boundaries. A fence will not promote security but push away community members.
- **Option 1 – Preferred & “Least bad option.”** This preserves most green space for the community, but least amount to students for play.
- **Option 2** – Has added benefit of giving some green space to students for play during school hours.
- **Option 3** – Maximizes green space for students but needs to preserve soccer field use and access for tee-ball.

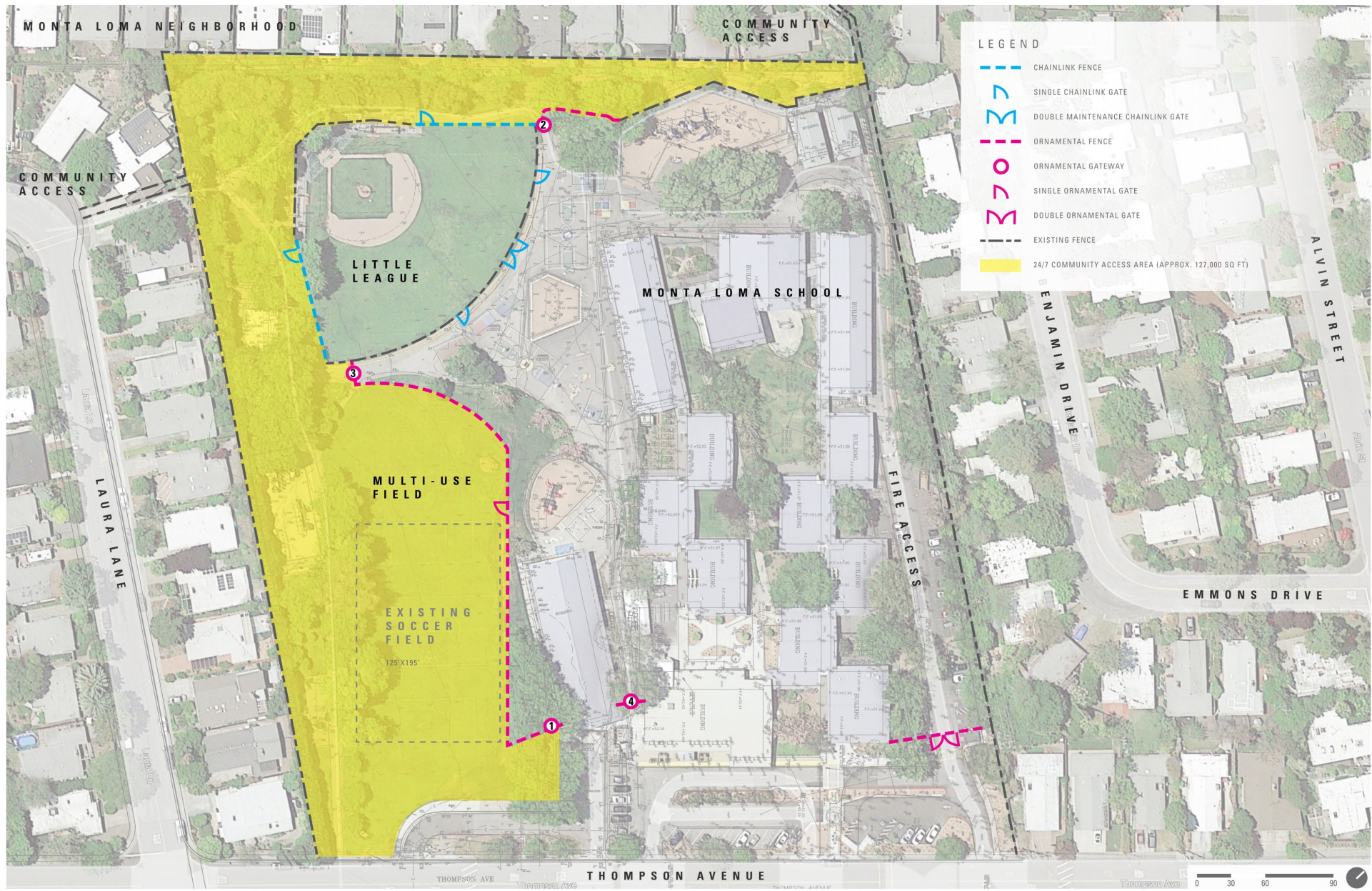
# Summary of what we heard – Ice Cream Social:

- **General Comments:**

- Fence should be 4' high, 5' high max
- Colors are preferred over black (i.e. Green, Blue)
- Fence product should be the option that provides highest visibility
  - Chain link is too institutional.
- Protect existing Gingko trees
- Fence would disrupt after-school play
- Curved fence style is nice
- Relocate and maintain tee-ball backstop

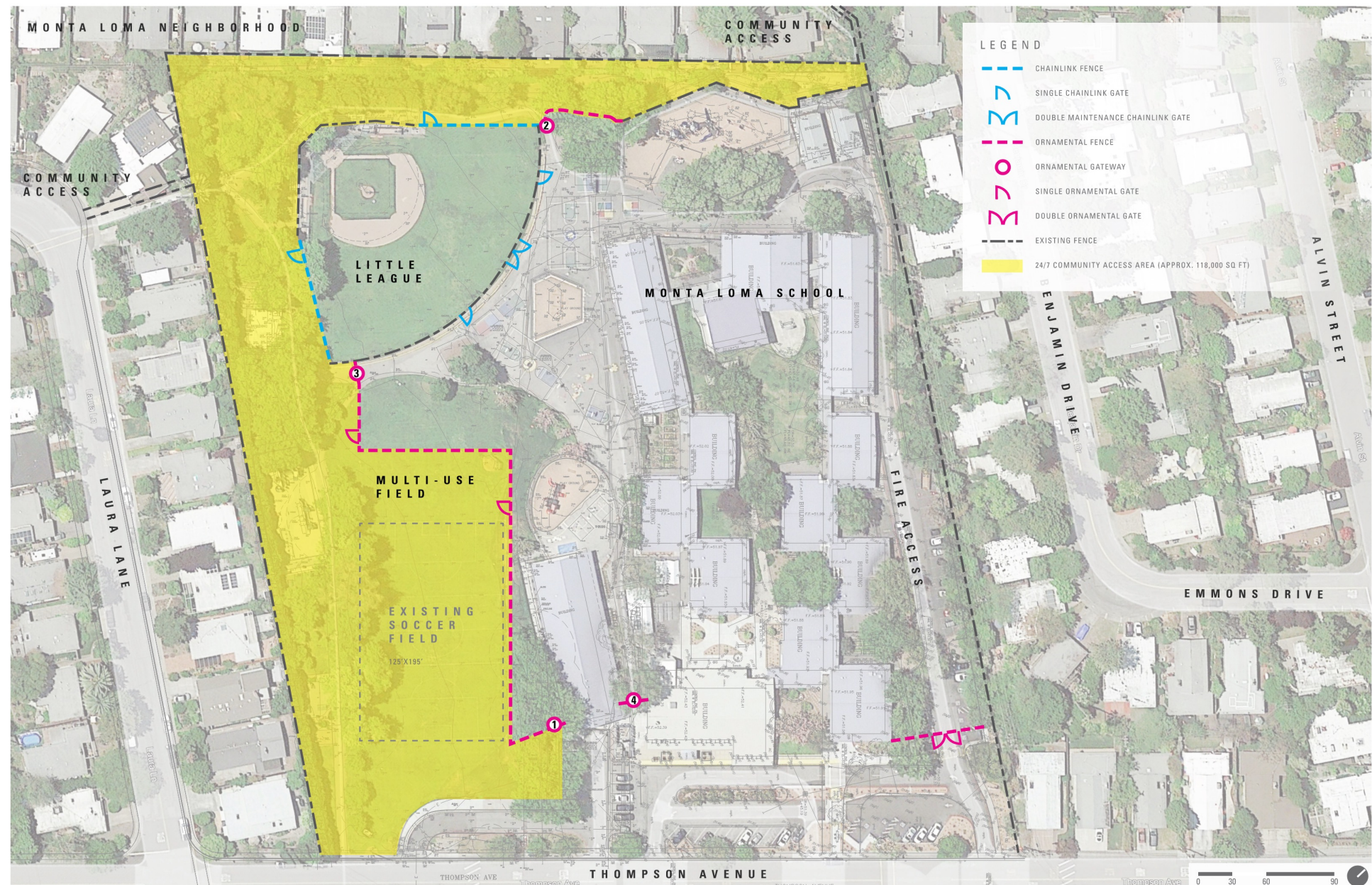
# PUBLIC AREA TAKEOFFS

OPTION 1:



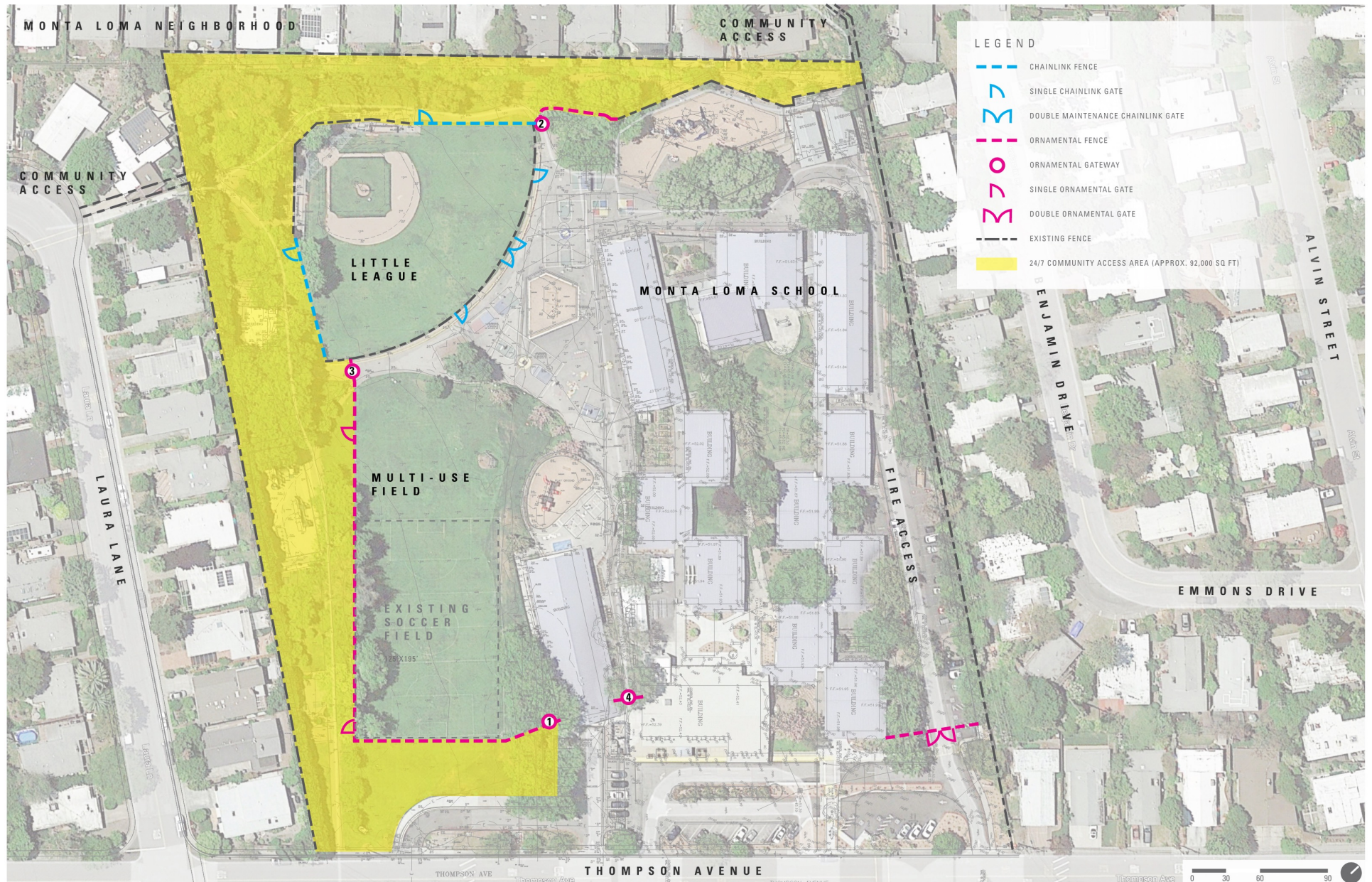


OPTION 2:





# OPTION 3:





An aerial photograph of a suburban neighborhood. In the center, there is a large school building with a white roof and a yellow section. To the left of the school is a green baseball field with a brown infield. The surrounding area is filled with residential houses, trees, and streets. The word "Questions?" is overlaid in the center of the image.

Questions?